

Idrosilex Pronto

**Cementitious mortar
for waterproofing
underground masonry
and for structures
containing also
potable water**



WHERE TO USE

- Repairing and waterproofing underground masonry subject to water and moisture seepage in situations with a counter-pressure up to 1 atmosphere.
- Waterproofing basins, reservoirs, concrete or masonry tanks containing sewer and potable water.
- As further smoothing and waterproofing compound of underground walls before laying bituminous membrane.

Some application examples

Waterproofing:

- interior and exterior cellar walls;
- damp areas;
- swimming pools and reservoirs;
- lift-rooms;
- underground passages;
- foundation walls;
- irrigation canals.

TECHNICAL CHARACTERISTICS

Idrosilex Pronto is a pre-blended powder, composed of a cement-based compound,

selected graded aggregates, and special synthetic resins according to a formula developed in the MAPEI research laboratories. When mixed with water, **Idrosilex Pronto** becomes a fluid mortar that can be applied by trowel or brush with excellent adhesion to the substrate for a complete waterproofing, even in the presence of slight counter-pressure.

RECOMMENDATIONS

- Do not use **Idrosilex Pronto** for solving internal condensation problems (use dehumidifying renders, improve ventilation to the area, or provide adequate insulation).
- Do not use on surfaces in gypsum, plasterboard, painted walls, plywood, chipboard, asbestos cement.
- Do not mix **Idrosilex Pronto** with admixtures, additives, cement or aggregates.
- Do not use on deformable or unstable surfaces.
- In no case should **Idrosilex Pronto** be applied to a substrate that shows signs of standing water on the surface.
- Do not dilute **Idrosilex Pronto** with more water than is specified.

Idrosilex Pronto



Grey Idrosilex Pronto mixed with water



Application of Idrosilex Pronto by spray gun in hydroelectric canal

- Do not use the product if the packing is damaged.

APPLICATION PROCEDURE

Preparing the substrate

The surface to be waterproofed must be perfectly clean and solid.

Remove friable or loose parts, dust, cement laitance, form release agents, varnishes and paint by mechanical brushing, sanding or high water pressure.

Renderers must be perfectly anchored to the substrate. Seal cracks in the substrate and repair damaged parts with the products from the **Mapegrout** line. Completely soak the substrate with water.

Wait for the evaporation of the excess water. If necessary, in order to accelerate the operation, use a sponge or compressed air.

Preparing the mortar

Pour into a clean bucket the amount of water corresponding to the required type of application (see table below).

Slowly mix in the **Idrosilex Pronto** with a low speed mechanical mixer.

Mix thoroughly for some minutes, taking care to blend in all the unmixed powder deposited on the sides and bottom of the bucket, until the mortar is completely blended (free from lumps).

Leave the mortar to stand for approximately 10 minutes, remix and apply.

Applying the mortar

Apply **Idrosilex Pronto** with a brush, trowel or spray.

Application by brush requires 2-3 coats. Make sure the previous coat is sufficiently dry before applying the next (generally 5-6 hours depending on the temperature and the absorption of the substrate). In order to have perfect

adhesion between the coats, it is recommended not to exceed 24 hours.

To achieve properly application a particular care to cover corners and coves is required.

When application is by trowel it is recommended to treat the substrate with **Idrosilex Pronto** using a brush for the first coat. When application is by spraying, a normal rendering machine can be used making sure to mix the product beforehand. After having soaked the substrate, apply the mix by spray in two layers. Apply the second one when the first has partially hardened. In all cases the final thickness of **Idrosilex Pronto** must be approximately 2-3 mm.

The hardened layer of **Idrosilex Pronto** represents a rigid waterproof membrane.

Idrosilex Pronto cannot be exposed to any type of traffic. When applied onto floors or surfaces subject to accidental fallings of objects that may cause damage, it must be protected with a 4-5 cm thick cementitious screed.

Precautions to be observed during application

In hot weather, on windy or very sunny days, it is recommended to spray the surface with water to prevent rapid evaporation of water from the mix.

Cleaning

Idrosilex Pronto can be removed from tools with water before it hardens. Once hardened, cleaning becomes difficult and can be carried out only mechanically.

CONSUMPTION

1.6 kg/m² per mm of thickness.

It is advised:

- for slight moisture penetration: 2-3 kg/m²;
- for reservoirs or structures where standing water is present: 4-4.5 kg/m²;
- for water with a pressure of up to 1 atmosphere: 6-7 kg/m².

PACKAGING

25 kg bags.

APPLICATION METHOD	LITRES OF WATER PER 25 KG BAG
by trowel	5.5-6.00
by brush	6.0-6.25
spraying	6.25

TAB. 1

TECHNICAL DATA (typical values)

PRODUCT IDENTIFICATION

Consistency:	powder
Colour:	grey or white
Specific gravity (kg/l):	1.3
Dry solid content (%):	100
Storage life:	12 months in original packing in a dry place
Hazard classification according to EEC 88/379:	irritant. Before use refer to the "Safety instruction" paragraph and the information on the packing and safety data sheet.
Customs class:	3824 50 90

APPLICATION DATA

Mixing ratio for application by brush:	100 parts by weight of Idrosilex Pronto with 24-25 parts water
Mixing ratio for application by trowel:	100 parts by weight of Idrosilex Pronto with 22-24 parts water
Mixing ratio for application by spraying:	100 parts by weight of Idrosilex Pronto with 25 parts water
Specific gravity of mix (kg/l):	1.65 ± 0.05
pH of mix:	approx. 12
Minimum temperature for application:	+5°C
Working time at +20°C:	2 hours
Application of following coats:	after 5 hours but not more than 24 hours at +20°C
Ready for use:	7 days

FINAL PERFORMANCES

Temperature when in use:	from -30°C to +90°C
Adhesion to concrete after 28 days:	> 1.5 N/mm ²



Application of Idrosilex Pronto by trowel



Application of white Idrosilex Pronto by spray gun in highway tunnel

Idrosilex Pronto

**All relevant references
of the product are available
upon request**

STORAGE

Idrosilex Pronto must be stored in a dry place in original, unopened packing.

SAFETY INSTRUCTION FOR THE PREPARATION AND APPLICATION

Contains cement, that in contact with sweat or other body fluids produces an irritant alkaline reaction.

Wear protective gloves and goggles.

For further information consult the safety data sheet.

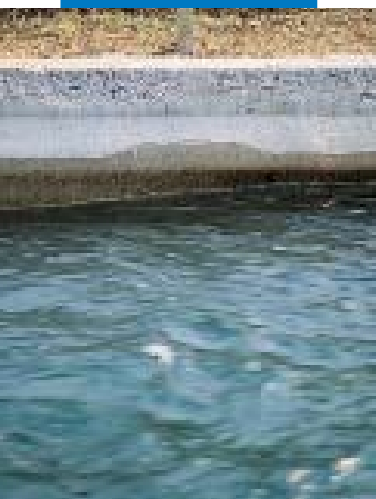
FOR PROFESSIONALS.

WARNING

N.B. Although the technical details and recommendations contained in this product report correspond to the best of our knowledge and experience, all the above information must, in every case, be taken as merely indicative and subject to confirmation after long-term practical applications; for this reason, anyone who intends to use the product must ensure beforehand that it is suitable for the envisaged application. In every case, the user alone, is fully responsible for any consequences deriving from the use of the product.



Bertini hydroelectric canal near Como, Italy.
Surfaces treated with Idrosilex Pronto



MAPEI GROUP CERTIFIED MANAGEMENT SYSTEMS (Quality, Environment and Safety)



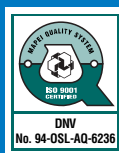
MAPEI S.p.A. - ITALY



MAPEI FRANCE



MAPEI INC - CANADA



RESCON MAPEI AS - NORWAY



MAPEI KFT. - HUNGARY



MAPEI FAR EAST Pte Ltd



MAPEI Sro - CZECH REP.